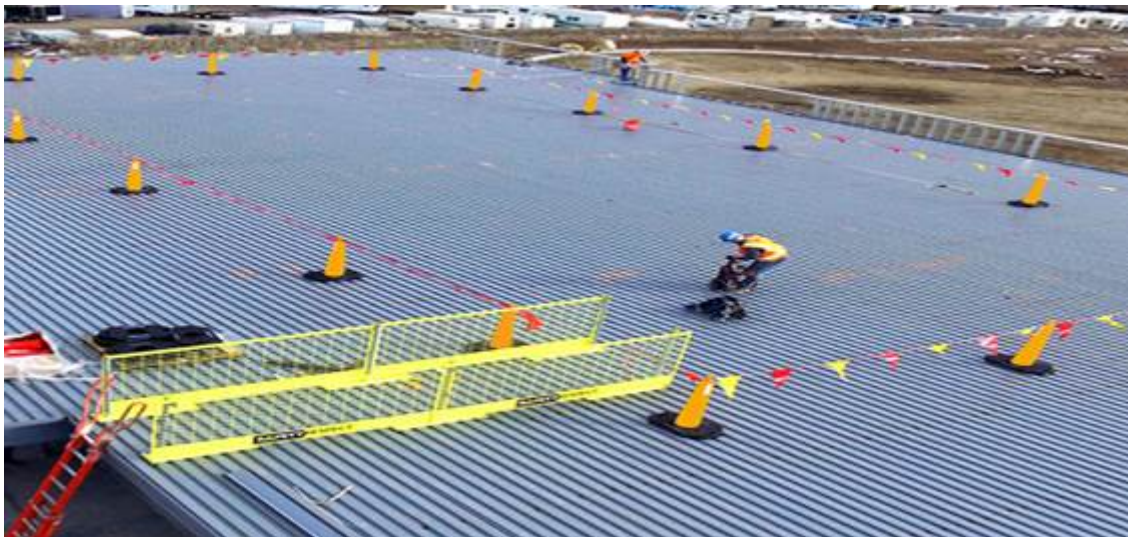


# 7-21-2025 TBT

## Warning/Safety Lines

ToolBox Talk -07-21-2025 - Warning/Safety Lines on Structures

Fall protection warning lines are critical safety measures used in construction to prevent falls. According to OSHA regulations, warning lines must be erected around all sides of the roof work area, or unprotected edge typically at least 6 feet from the roof/wall edge when mechanical equipment is not in use. These lines serve as a visual barrier to alert workers of the unprotected edges and are essential in fall protection plans, especially on low slope roofs. It's important to note that while warning lines are a key component of fall protection, they should be used in conjunction with other safety measures, such as guardrails, to ensure comprehensive safety.



---

Revision #1

Created 2025-07-24 13:02:05 UTC by Blain Schumacher

Updated 2025-07-24 13:03:13 UTC by Blain Schumacher